



Timber Production &  
Wholesale. **Worldwide.**





# About LTF GROUP

Welcome to LTF Group, where timber production is at its best.

Established in 2005 we have started as wood traders, we've evolved into timber manufacturer, having export destinations worldwide.



# Why LTF Group



## Global Reach, Local Expertise

We're not confined by borders, our reach is global. With over 20+ years of experience and know-how in the wood industry, we have extended our expertise to excel in timber production as well.



## Quick Deals

In the fast-paced world of business, timing is everything. Your satisfaction is our priority, and we're here to make your business transactions as seamless as possible.



## Fair Prices

In our commitment to providing excellent service, we can provide fair prices by collaborating with trusted, long-standing partners and by manufacturing wood products in-house.



## Dedicated team

The Heart of Our Success is our dedicated team. Comprising experienced professionals, they bring their expertise to every aspect of our operations. From production to export managers, our team is committed to excellence and responsibility.



## Multilingual Client Support.

We are offering multilingual client support, ensuring our customers' needs are met in English, Russian, Italian, and French. Our team is dedicated to providing clear communication and assistance to our global clients and partners.



## Certified Suppliers, Certified Quality

We believe in the power of partnerships. That's why our suppliers are carefully selected, ensuring that every piece of timber that reaches your is of the highest quality and sourced sustainably.



## LTF Group timber processing factory

LTF Group timber processing factory and warehouses are strategically located in Lithuania, a North European country, to serve as a hub for our global operations.

Our production is stored in warehouses reaching an area over 5,500 square meters. Using our yearly planed product capacity of 50,000 cubic meters.



## Door-to-door service

Enjoy the convenience of our door-to-door service, where you place an order, and we handle all the necessary processes to ensure your product's logistics services and reach you on time and in perfect condition.



## Sustainability

We embrace the use of wood as one of the most sustainable building materials, contributing positively to the ecosystem. Our approach revolves around circular economy principles to minimize resource waste and environmental impact. We prioritize social responsibility, fostering a workplace where all employees feel valued and promoting diversity and equality within our team.



## High quality timber sources

Our carefully selected network of suppliers includes Sweden, Finland, Lithuania, Germany, Estonia, and Ukraine guaranteeing a wide array of wood types, each contributing to the unique character of our products. This international perspective allows us to provide timber solutions that meet the highest industry standards and satisfy the distinct needs of our customers worldwide.

We are committed to responsible production using FSC®-certified wood, BIS, CATG certifications.





**THERMOWOOD**

Wood thermally processed at 160–230 °C (320–446 °F) becomes resistant to decay, inhibits fungal growth, and repels wood-boring insects, including termites

**Exterior cladding**



TDL-A



TDL-B



TDL-P 4



TDL-P 5



TDL-C

**Battens / Constructional timber**



TDL-P 7



TDL-P 8



TDL-P

**Decking**



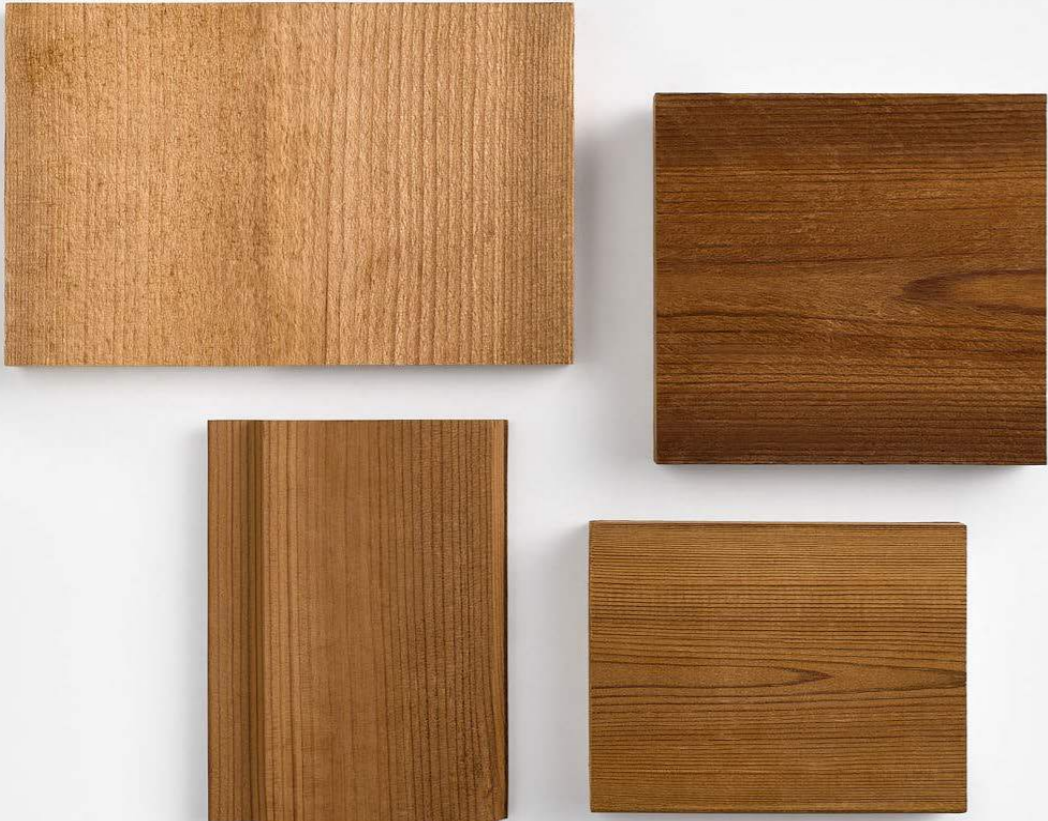
TTL-A



TTL-B

**Dimensions (mm):**

19 x 95	26 x 140
19 x 117	32 x 142
19 x 140	42 x 42
20 x 117	42 x 68
20 x 140	42 x 92
26 x 92	42 x 117
26 x 117	42 x 140



**Thermowood**

Thermowood is a remarkable timber product that undergoes a specialized heat treatment process, enhancing its durability, stability, and overall quality.



**Benefits**

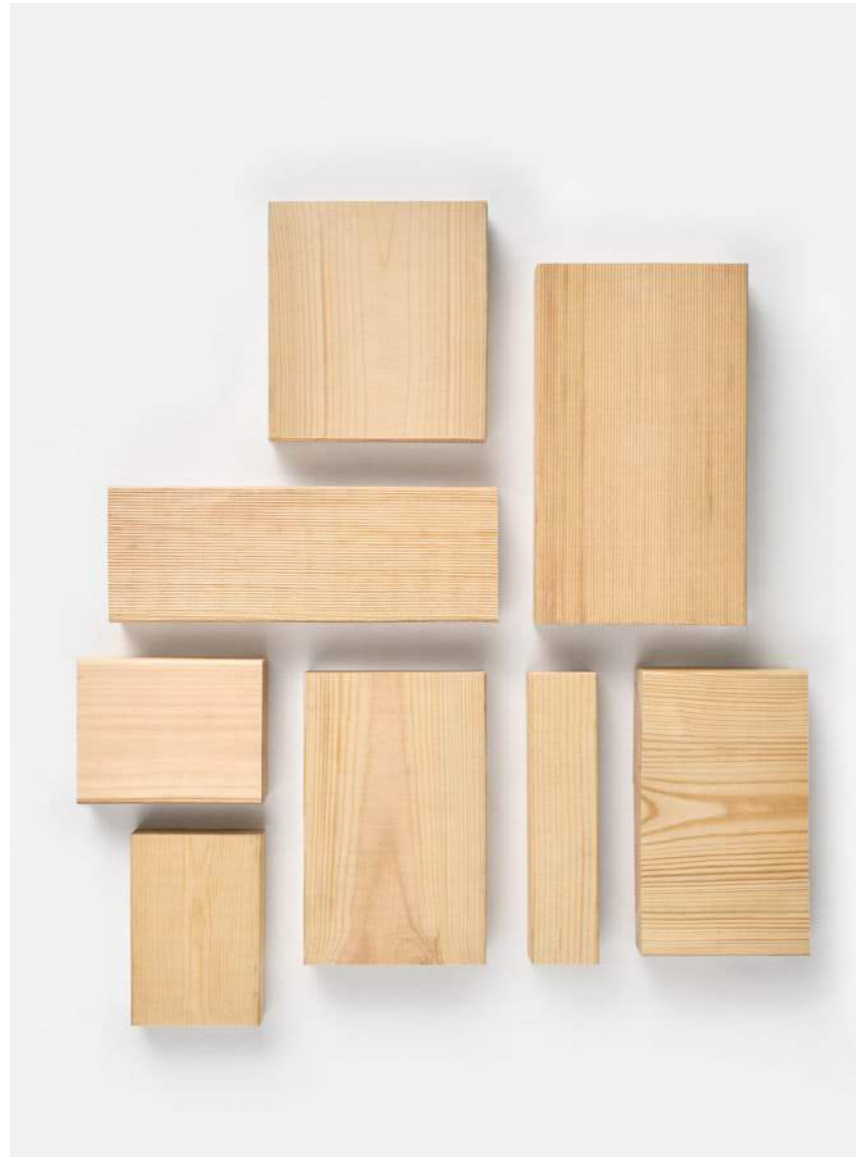
- ☑ Enhanced Durability
- ☑ Reduced Moisture Absorption
- ☑ No Chemical Treatment
- ☑ Longevity
- ☑ Beautiful Aesthetics
- ☑ Stability
- ☑ Sustainability

# Structural Timber & Carcassing

We specialize in manufacturing top-notch structural calibrated carcassing wood. Our industrially dried, precisely calibrated wood adheres to the **C24 / MGP10 standard**.

Structural timber processed in Lithuania ensures consistent and stable grading to required standards.

FSC® 100% certificate code  
NC-COC-062895



## STRUCTURAL TIMBER & CARCASSING



Actual Thickness (mm):	Actual Width (mm):
	•63 •70 •89 •90 •95 •100 •120 •140 •145 •170 •175 •190 •195
•35	•70 •89 •120 •140 •170 •190
•38	•63 •89 •140
•45	•70 •89 •90 •95 •100 •120 •140 •145 •170 •175 •190 •195
•70	•70 •89 •90 •145

C16/24, MGP10/MGP12 CARCASSING (TREATED GREEN/BROWN UC2/UC3/UC4, NTR AB/NTR A, CTB+ & UNTREATED)



# Cladding

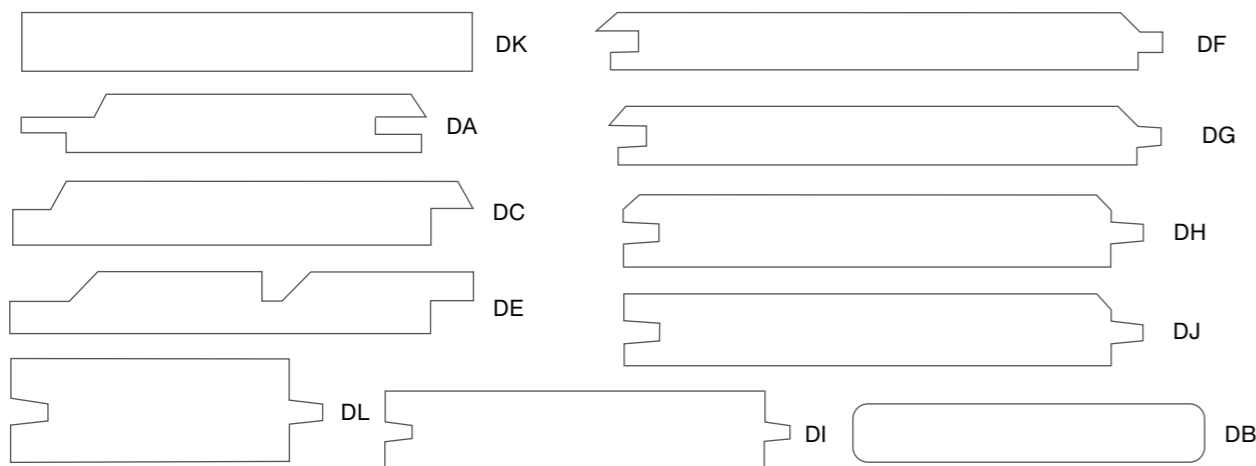
Cladding processed in LTF Group timber processing factory ensures the highest visual and mechanical quality.

We craft exquisite cladding wood from accurately dried, top-quality spruce and pine wood. Our commitment to quality extends to the very source, as we meticulously choose certified wood suppliers to ensure premium materials. Experience cladding with a smooth, finely planed surface that exemplifies our dedication to excellence.

FSC 100% certificate code  
NC-COC-062895



## Interior & Exterior Cladding Shapes



DG



LDA



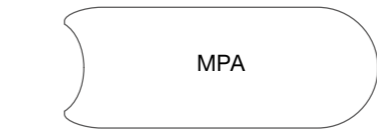
VDA

## Joinery wood

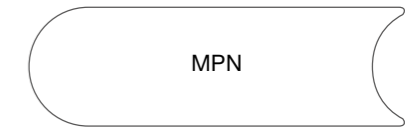
Tongue and groove (treated & untreated)



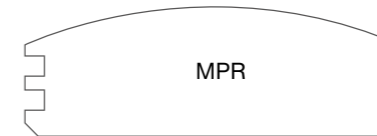
MPN



MPA



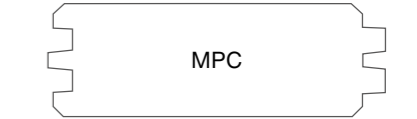
MPN



MPR



MPB



MPC

Exterior Cladding		Interior Cladding	Block	Possible lengths: (m)
18 x 95	19 x 195	12 x 75	28 x 120	2.4
18 x 120	21 x 95	12 x 90	28 x 145	3.0
18 x 145	21 x 120	12 x 120	34 x 195	3.6
19 x 95	21 x 145	14 x 75	38 x 145	4.2
19 x 121	21 x 195	14 x 90	42 x 120	4.8
19 x 145		14 x 120	44 x 120	
			44 x 145	

## Benefits

- ☑ Rough surface
- ☑ Smooth surface
- ☑ Pine, spruce
- ☑ For interior and exterior
- ☑ Precise dimensions
- ☑ Natural and eco-friendly
- ☑ Designed for use
- ☑ Various shapes



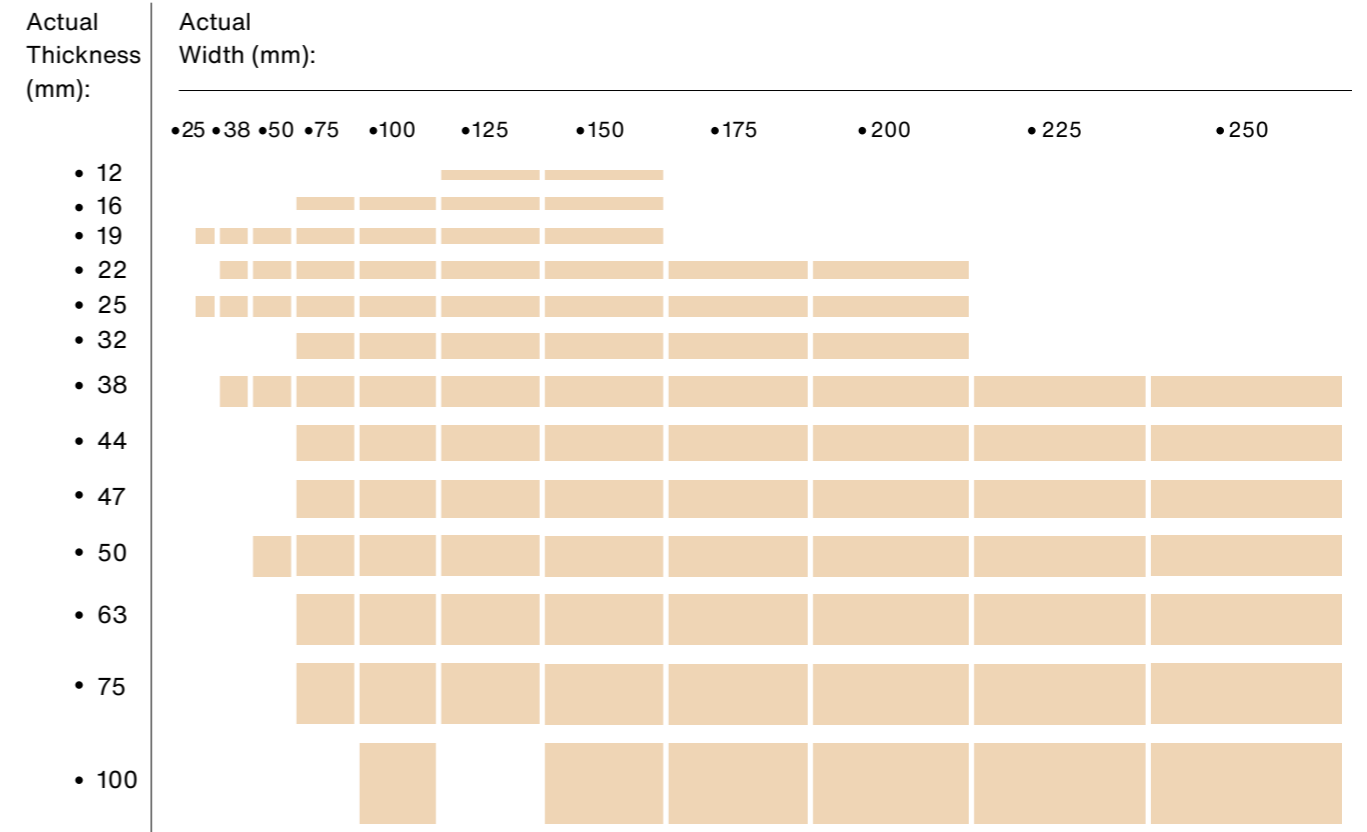
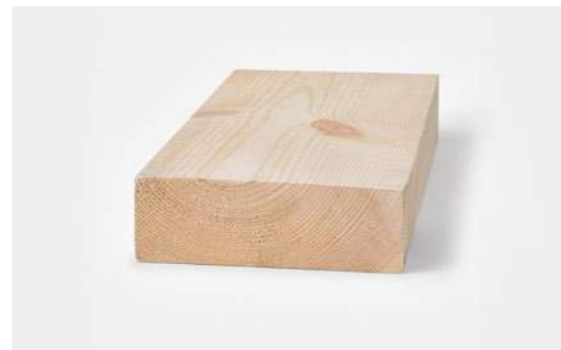
## Sawn timber

We offer high-quality certified Scandinavian - Finnish and Swedish - double-cut sawn timber products. We pride ourselves on using only the best redwood and whitewood that grow slowly in demanding conditions across Northern Europe.

Sawn timber assortment includes:

- Redwood (Pine)
- Whitewood (Spruce)

### Roofing battens





# Terrace wood

We produce and supply premium terrace wood that's perfect for a wide range of applications.

FSC 100% certificate code  
NC-COC-062895



Actual Thickness (mm):	Actual Width (mm):			
	• 95	• 120	• 145	• 195
• 19				
• 27				
• 28				
• 32				
• 35				

### Possible lengths (m):

1.8	3.3	5.1
2.1	3.6	5.4
2.4	3.9	5.7
2.7	4.2	6.0
3.0	4.8	

### Decking



### Benefits

- Pine
- Planed
- Scandinavian wood
- Available in non-standard dimensions
- Natural
- Aesthetic
- Easy to maintain
- Heat absorbing

# Wooden pallets components

We supply wooden pallet components, available in three distinct grades to meet diverse industry needs: from premium grade for high-strength needs, to standard and economy grades for cost-effective solutions. Upon request, we offer additional services such as timber drying and chemical treatments.

### Species

Softwood – mixed pine and spruce.  
Hardwood – mixed birch, alder and aspen.

### Measurements (mm):

from 12 up to 200

### Width (mm):

from 60 up to 200

### Length (mm):

from 800 to 6000



### Benefits

- High quality
- Coniferous wood
- Hardwood
- 3 quality grades
- Drying treatment
- Chemical treatment





## Glued laminated timber

Length (m):  
12 and 13,5

High-quality glued laminated timber (glulam) is characterized by high load-carrying capacity, dimensional stability and the ability to form the timber components into almost any shape. Glued laminated timber is available in straight and curved shapes, thus opening up almost unlimited freedom of design in timber construction.



## Laminated Veneer Lumber (LVL)

Laminated Veneer Lumber (LVL) is a high-strength engineered wood product, ideal for a wide range of structural applications, from beams and frames to columns and trusses. Its uniform, layered construction minimizes natural defects found in traditional timber, providing enhanced stability, strength, and reliability.

### Benefits

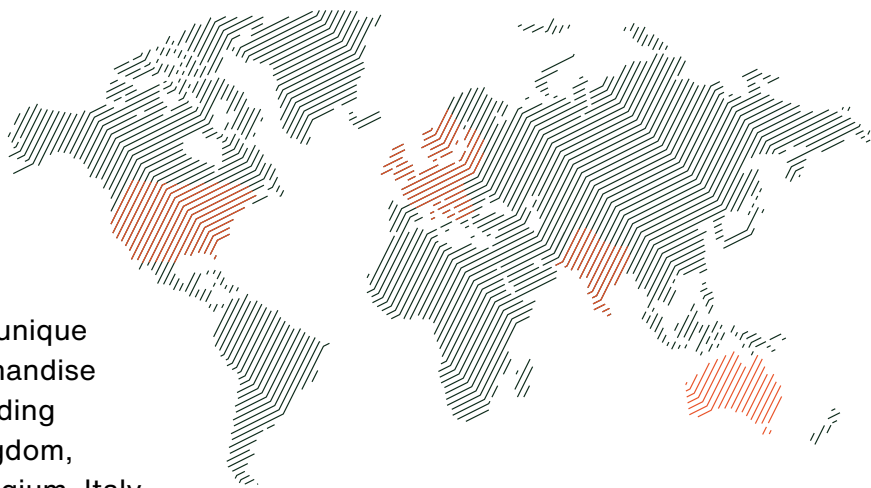
- ☑ Enhanced Strength & Load-Bearing Capacity
- ☑ Versatility in Design
- ☑ Dimensional Stability
- ☑ Uniform Quality
- ☑ Eco-Friendly

### Benefits

- ☑ Innovated shapes: straight, cambered and in special shapes
- ☑ High dimensional stability due to gluing
- ☑ High fire and chemical resistance
- ☑ Large span lengths
- ☑ Fast and dry construction method
- ☑ High thermal insulation properties
- ☑ High load-carrying capacity with low density
- ☑ Can be worked with simple tools
- ☑ Natural, renewable and 100% recyclable building material



Our company is recognized as a reliable wholesale trade partner.



Tailoring our products to meet the unique needs of each customer, our merchandise reaches countries **worldwide**, including Australia, the USA, the United Kingdom, Germany, Austria, Switzerland, Belgium, Italy, France, Denmark, Norway, India, and others.



[www.ltfgroup.lt](http://www.ltfgroup.lt)

[info@ltfgroup.lt](mailto:info@ltfgroup.lt)

**Office:**

Nemenčinės pl. 4C-101, LT-10109 Vilnius, Lithuania

**Production:**

Vairuotojų g. 10, LT-29107 Anykščiai, Lithuania

